



# FP600

## Application

- Suitable for most single and double action doors including automatic doors.
- Internal and External use (specify when ordering).

## Description

- Easy to fit tamper proof CLICK system.
- Provides effective protection against fingers being accidentally trapped in the hinge side of the door.
- Strong fire retardant fabric kept under constant tension covering the gap between the door and frame automatically when door is opened and closed.
- Elegantly shaped cover caps.
- Ram protection available - deflection shield as additional protection (sold separately).

## Technical Data

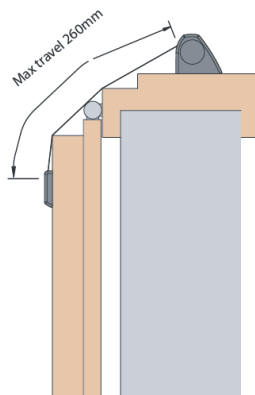
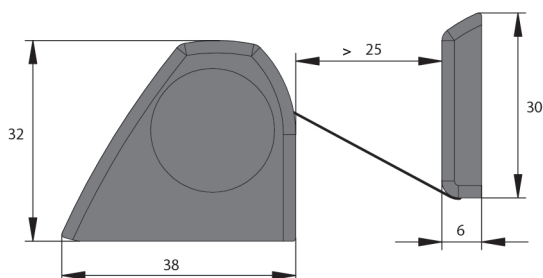
Roller system specifications:

- Cycle tested to 200,000 operations
- Maximum length: 2500mm
- Standard length: 1925mm
- Minimum length: 325mm
- Maximum fabric travel: 260mm

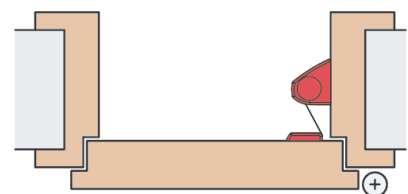
# FP600X

- Maximum length: 2500mm
- Standard length: 2015mm
- Minimum length: 325mm
- Maximum opening: 260mm
- For automatic doors
- Meets the requirements for EN16005 for automatic doors

## Dimensions

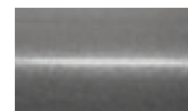


## Application

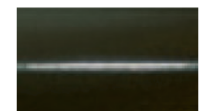


Housing finish options

Fabric colour

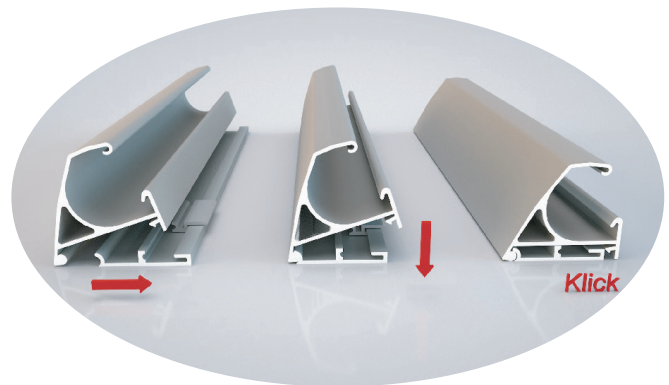


Satin Anodised Aluminium (SAA)



Black

RAL colour match available on request. (POA) Please contact us to enquire.



Awarded German Safety Mark and certified to EN16654

