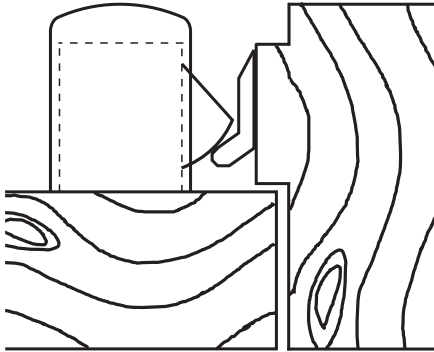
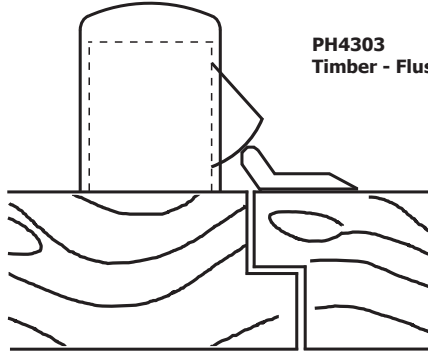


Drawings are for guidance only

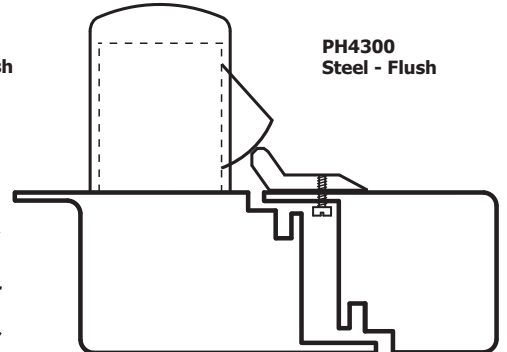
**PH4303**  
Timber - Recessed



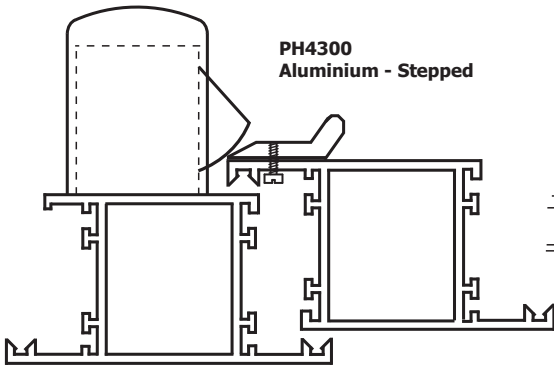
**PH4303**  
Timber - Flush



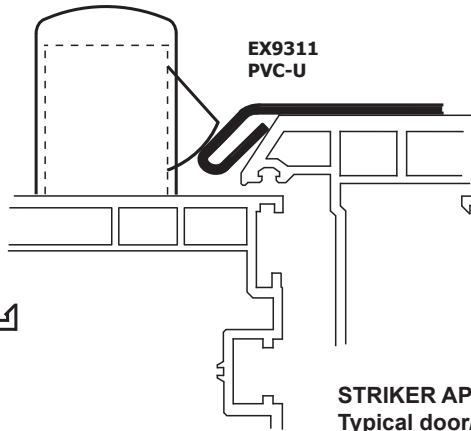
**PH4300**  
Steel - Flush



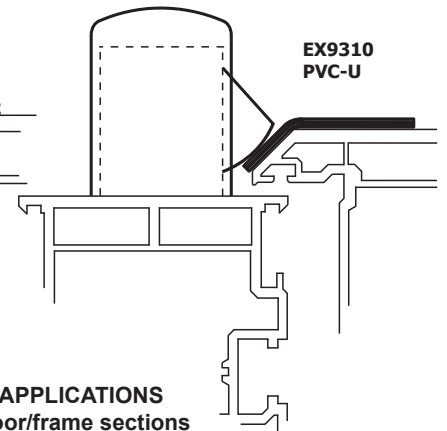
**PH4300**  
Aluminium - Stepped



**EX9311**  
PVC-U



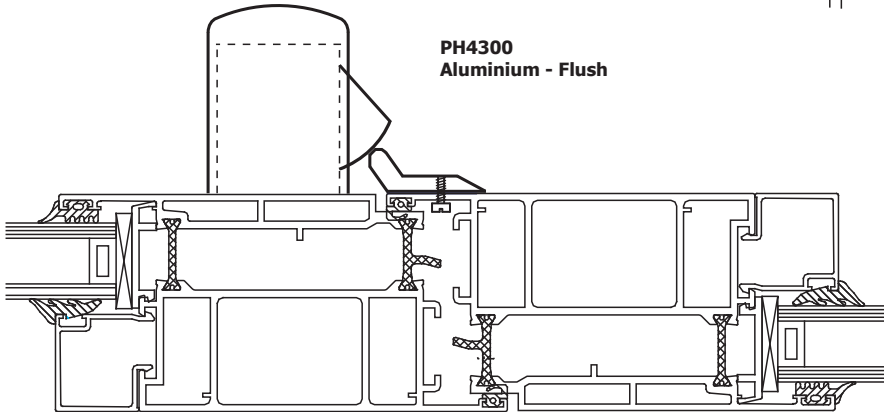
**EX9310**  
PVC-U



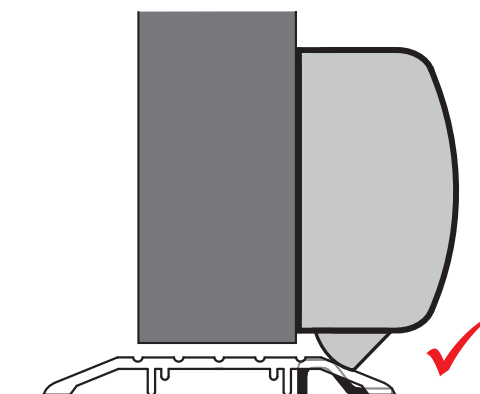
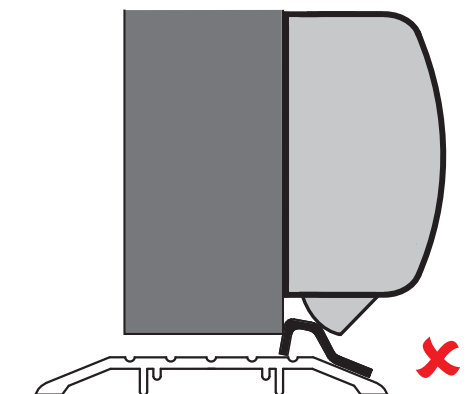
**STRIKER APPLICATIONS**  
Typical door/frame sections  
showing correct use of strikers

A range of PVC-U profile related  
strikers is also available

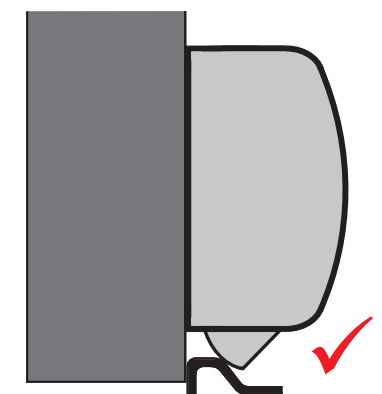
**PH4300**  
Aluminium - Flush



Floor strikers should be mounted  
on floor as shown. If aluminium  
low threshold strips are used the  
striker should be notched into  
aluminium section to comply with  
current legislation.



**PH4304**  
Floor Striker





0425 - 1519 - 10

EN1125: 2008

STRAND HARDWARE LIMITED

Strand House Long St Premier Business Park  
Walsall West Midlands WS2 9DY ENGLAND

3-7-7-B-1-4-2-2-A-A

Max 1300mm

Max 2500mm



The safety features of this exit device are of fundamental importance to ensure its compliance with standard EN1125.

No modifications of any kind to the device other than those described in the fitting instructions are permitted.

This panic device may be fitted to fire or smoke door assemblies.

Attention: Exit devices shall not include dogging (hold unlocked) when fitted to fire or smoke door assemblies - dogging can only be used on escape doors.

Component	Qty
GR1	2
V1	8
V2	4
V3	4

For recessed situations the PH4303 should be turned 90 degrees to door face as shown - see page 4 (strike application)



Measurement Z varies depending on recessed, flush or stepped applications. This measurement should be established before holes are drilled into door section.

**IMPORTANT:** Before the fitting of an Outside Access Device onto a door it is important to establish the correct position of the centre mechanism and appropriate striker



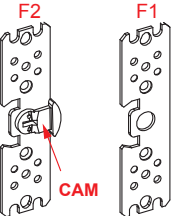
For flush situations strikers should be mounted on frame as shown below. 1mm packers are provided with each striker



For stepped applications 4 - 8mm the striker can be rotated 180° as shown here.

Position flat plate F1 beneath mechanism as shown. If used in conjunction with an OAD use F2 plate with integral cam - this plate is supplied with all outside access devices (ensure cam is positioned as shown)

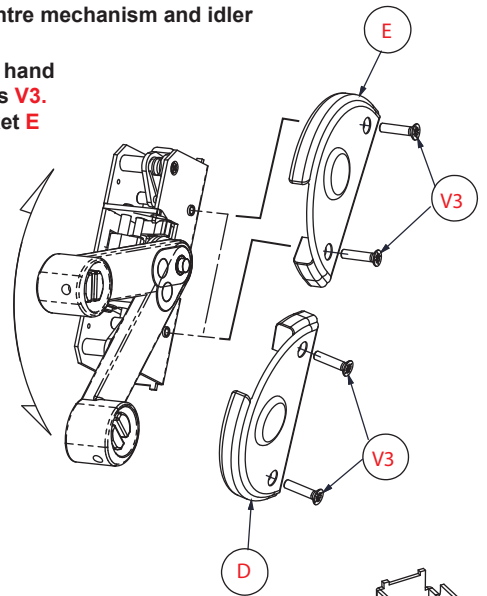
**FIXING PLATES F\***



**Handing of centre mechanism and idler**

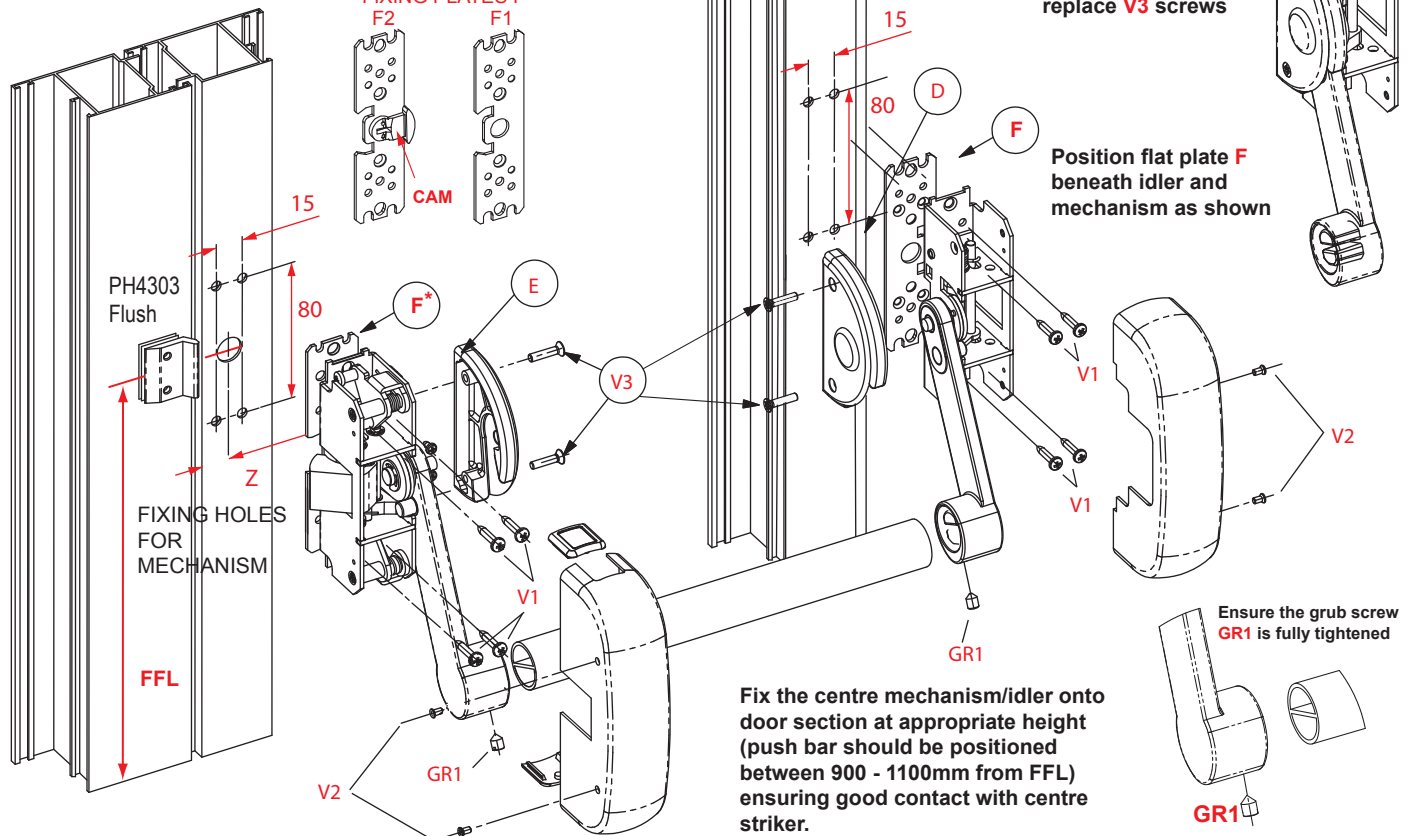
To change the hand remove screws V3. Remove bracket E

Rotate crossarm bracket upwards as shown and invert both idler and mechanism



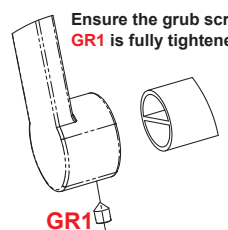
Fit alternative bracket and plate D - Now replace V3 screws

Position flat plate F beneath idler and mechanism as shown



Fix the centre mechanism/idler onto door section at appropriate height (push bar should be positioned between 900 - 1100mm from FFL) ensuring good contact with centre striker.

Ensure the grub screw GR1 is fully tightened



 0425 - 1519 - 10 EN1125: 2008	STRAND HARDWARE LIMITED Strand House Long St Premier Business Park Walsall West Midlands WS2 9DY ENGLAND
	3-7-7-B-1-4-2-2-A-A



The safety features of this exit device are of fundamental importance to ensure its compliance with standard EN1125.

No modifications of any kind to the device other than those described in the fitting instructions are permitted.

This panic device may be fitted to fire or smoke door assemblies.

Attention: Exit devices shall not include dogging (hold unlocked) when fitted to fire or smoke door assemblies - dogging can only be used on escape doors.

Fix the centre mechanism of touchbar onto door section at appropriate height (touch bar should be positioned between 900 - 1100mm from FFL) ensuring good contact with centre striker if required.

Fix top and bottom pullmans ensuring good contact with top and bottom strikers.

Cut threaded rods to size  
( $X + 25\text{mm}$  &  $Y + 25\text{mm}$ )

Insert threaded rod **B** into connector **A** with lock-nuts **C** as shown.

Push **RG** rubber grommets over thread (2 per rod)

Insert threaded rod into riv-nut **D** of pullman latch and rotate.

Push connector **A** over bush of centre mechanism as shown.

Insert M4 screws **E** to secure connector in place

After final adjustments of rods are made, secure all lock-nuts making sure that all of the connections are tight.

Care should be taken to ensure any lost motion is prevented by adjustment of threaded rods and lock-nuts.

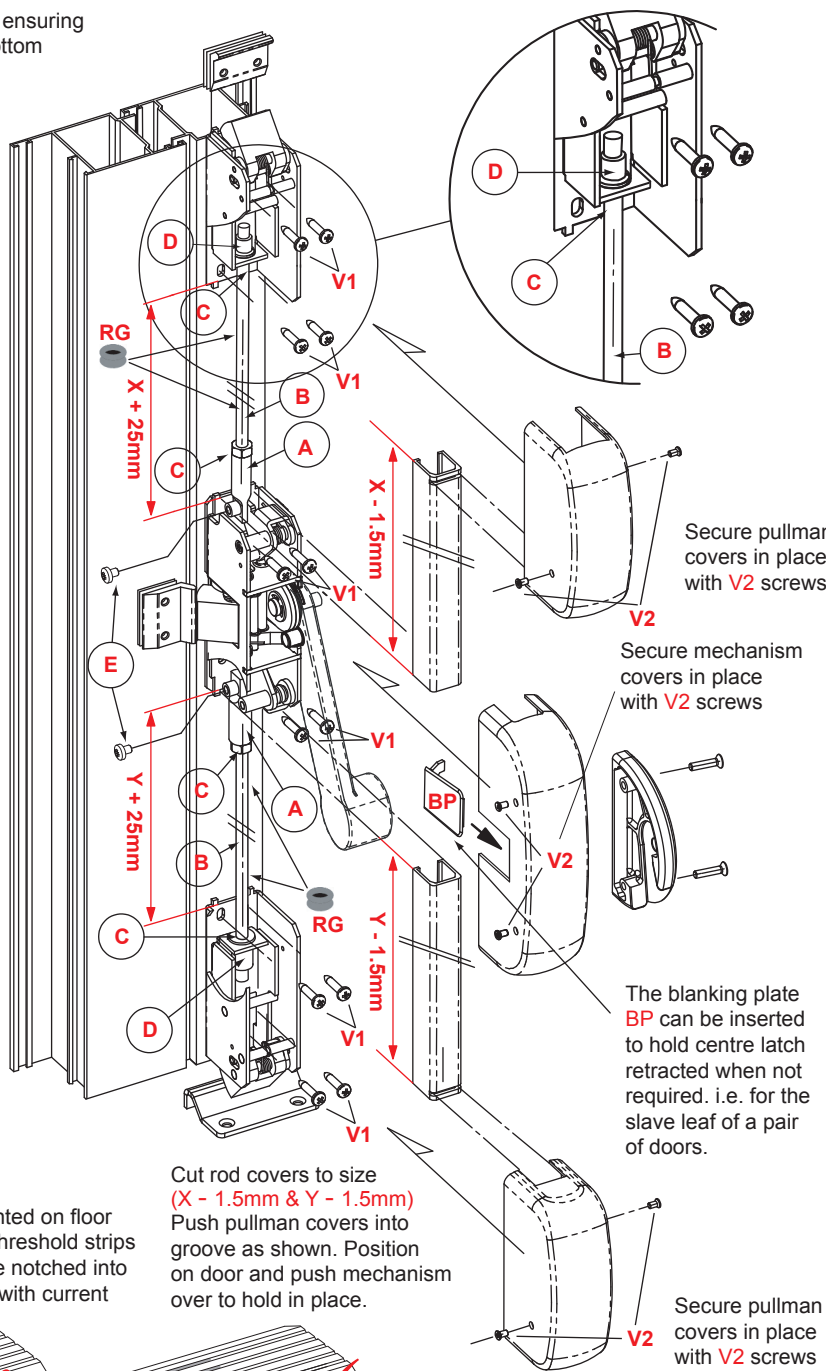
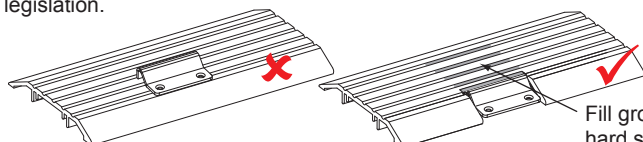
Length of threaded rods:

$X + 25\text{mm}$   
 $Y + 25\text{mm}$

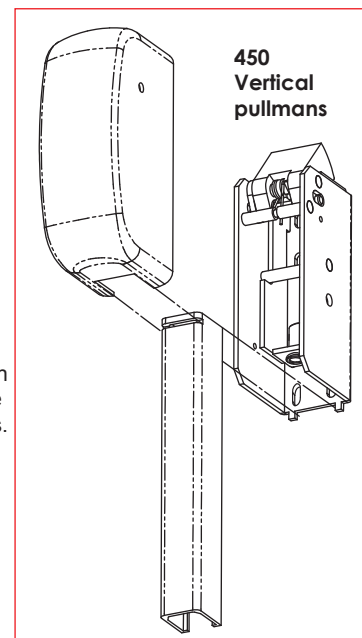
Length of rod covers:

$X - 1.5\text{mm}$   
 $Y - 1.5\text{mm}$

Floor strikers should be mounted on floor as shown. If aluminium low threshold strips are used the striker should be notched into aluminium section to comply with current legislation.



**IMPORTANT:** Before the fitting of an Outside Access Device onto a door it is important to establish the correct position of the centre mechanism and appropriate strikers.



Component	Qty
V1	16
V2	8
A	2
C	2
E	2
BP	1
RG	4

Ensure rubber washers **RG** are pushed over threaded rods to prevent any vibration or rattle



0425 - 1519 - 10

EN1125: 2008

STRAND HARDWARE LIMITED

Strand House Long St Premier Business Park  
Walsall West Midlands WS2 9DY ENGLAND

3-7-7-B-1-4-2-2-A-A

Max 1300mm

Max 2500mm



The safety features of this exit device are of fundamental importance to ensure its compliance with standard EN1125.

No modifications of any kind to the device other than those described in the fitting instructions are permitted.

This panic device may be fitted to fire or smoke door assemblies.

Attention: Exit devices shall not include dogging (hold unlocked) when fitted to fire or smoke door assemblies - dogging can only be used on escape doors.

Fix the centre mechanism of touch bar onto door section at appropriate height (touch bar should be positioned between 900 - 1100mm from FFL) ensuring good contact with centre striker.

Fix top and bottom pullmans ensuring good contact with top and bottom strikers.

Cut threaded rods to size (X + 15mm & Y + 15mm)

Insert threaded rod B into connector A with lock-nuts C as shown.

Push RG rubber grommets over thread (2 per rod)

Insert threaded rod into riv-nut D of pullman latch and rotate.

Push connector A over bush of centre mechanism as shown.

Insert M4 screws E to secure connector in place

After final adjustments of rods are made, secure all lock-nuts making sure that all of the connections are tight.

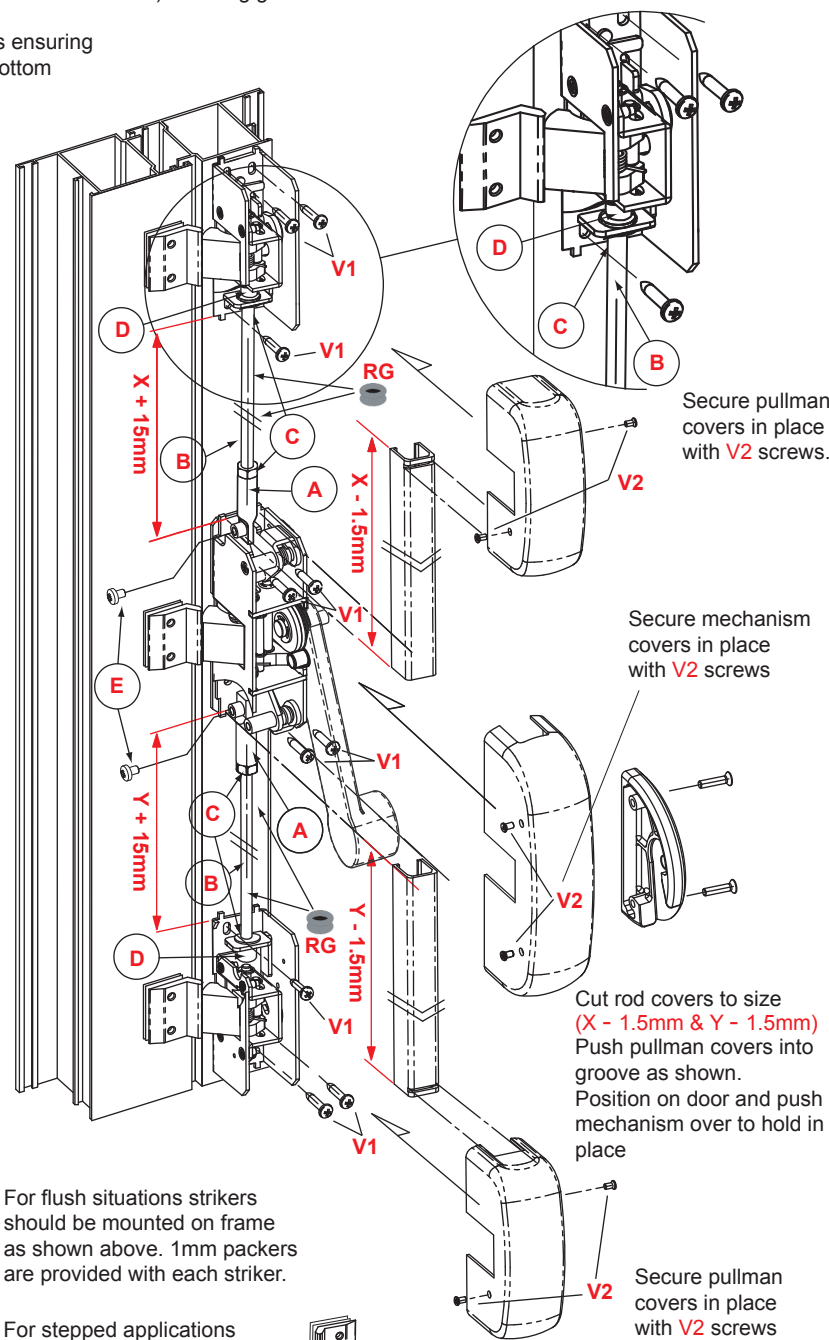
Care should be taken to ensure any lost motion is prevented by adjustment of threaded rods and lock-nuts.

Length of threaded rods:

X + 15mm  
Y + 15mm

Length of rod covers:

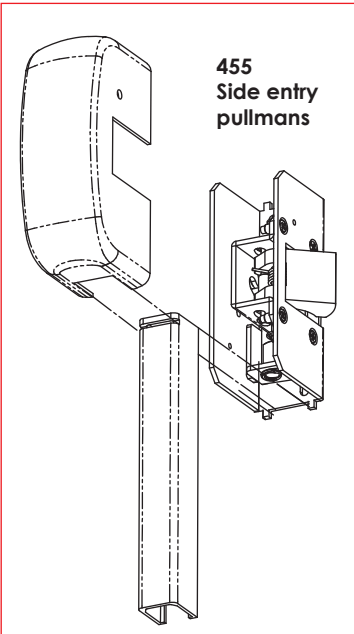
X - 1.5mm  
Y - 1.5mm



For flush situations strikers should be mounted on frame as shown above. 1mm packers are provided with each striker.

For stepped applications 4 - 8mm the striker can be rotated 180° as shown here. Also see striker applications on page 4 for typical applications.

**IMPORTANT:** Before the fitting of an Outside Access Device onto a door it is important to establish the correct position of the centre mechanism and appropriate strikers



Component	Qty
V1	14
V2	8
A	2
C	2
E	2
BP	1
RG	4

Ensure rubber washers RG are pushed over threaded rods to prevent any vibration or rattle