

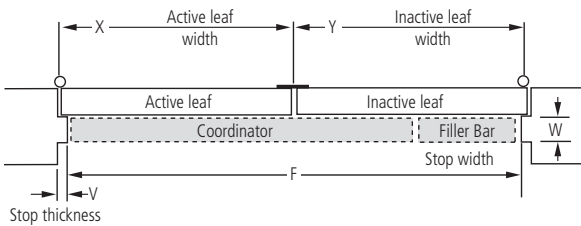
### Type C - Heavy Duty Mechanical Door Controls

#### REL.COR Coordinators - (or Door Selectors)

##### Correct Specification & Ordering

Correct specification and ordering is straightforward with the following step-by-step instructions:

- Start with the active leaf width (X)
- Next consider the overall opening between stops (F)
- Preferably, the coordinator would equal the active door width (X) + approximately 1/2 the inactive door width (Y)
- Keep in mind the coordinator must be at least 152mm longer than the active door width (X) and less than the overall frame opening between stops (F)



##### Example:

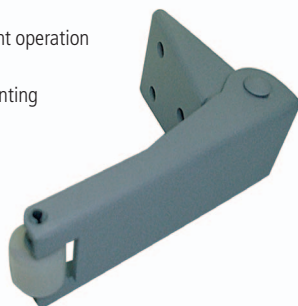
- Active (X) & inactive (Y) leaf widths 762mm each with 16mm stops
- Overall frame opening between stops (F) = 1492mm

Recommended Coordinator: **REL.COR42** with **REL.FL20** Filler Bar  
(See page 36 for more dimensional detail).

#### REL.CBI - Carry Bar

Carry bars are a necessary part of any specification (including coordinators) where it is possible to open the inactive leaf before the active leaf. Fixed to the inactive leaf, the carry bar straddles the meeting stile and pushes the active leaf open at the same time as the inactive leaf. At a point just before the nylon roller leaves the active leaf the coordinator is able to hold the active leaf ajar - ensuring both doors close in the correct order.

- **REL.CB1** carry bars prevent damage to doors and associated hardware
- The nylon roller ensures quiet and efficient operation
- Standard sex bolts for through door mounting
- **REL.CB1** carry bars are non-handed
- All steel construction



##### How to Specify or Order

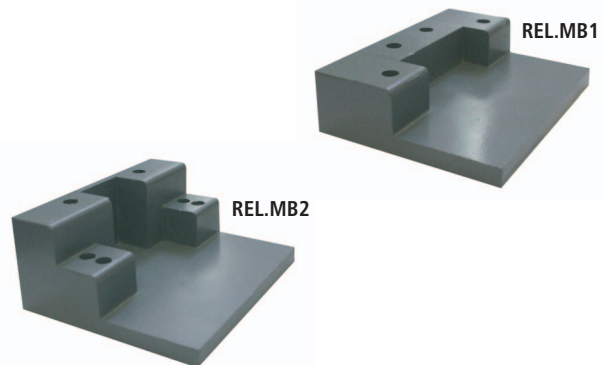
<b>Example</b>	<b>COR — 52 — US28 — FL20 — 2/MB</b>
COR Size: 32, 42, 52, 62, 72	↑
Finishes: US28, US26D, 315AN (Black)	↑
Filler Bar: REL.FL20, REL.FL32, REL.FL44	↑
Mounting Brackets: REL.MB1, REL.MB2	↑

#### REL.MB1 & REL.MB2 - Coordinator Mounting Brackets

Often, where coordinators are used in conjunction with surface overhead door closers to the stop face (push side) of pairs of doors, additional brackets must be introduced.

**REL.MB** brackets allow stop mounted hardware, such as a door closer PA (parallel arm) shoe or the top latch strike of a surface vertical rod escape device, to be properly installed without damaging the **REL.COR** coordinator. Stop mounted hardware is lowered necessarily to compensate for the depth of the coordinator and the 'wrap-around' mounting bracket.

**REL.MB** mounting brackets are manufactured from aluminium and furnished normally in a USP (primed for painting) finish.



##### Dimensions:

- REL.MB1** - 102mm wide x 76mm deep x 24mm high.
- REL.MB2** - 102mm wide x 83mm deep x 41mm high.

Product Ref. ≠	Reveal Depth	Stop Width
REL.MB1	121mm min	>63.5mm
REL.MB2	121mm min	<63.5mm