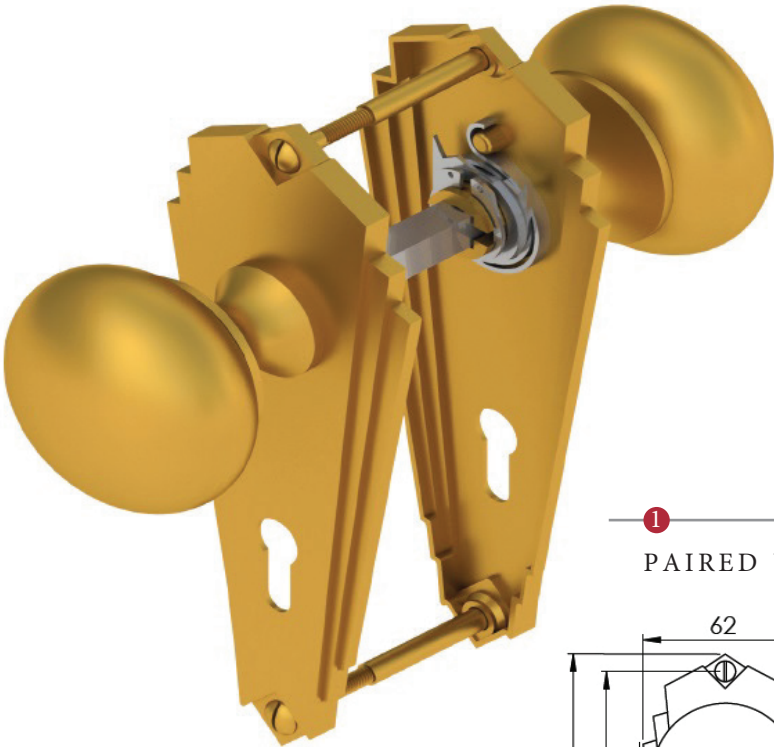
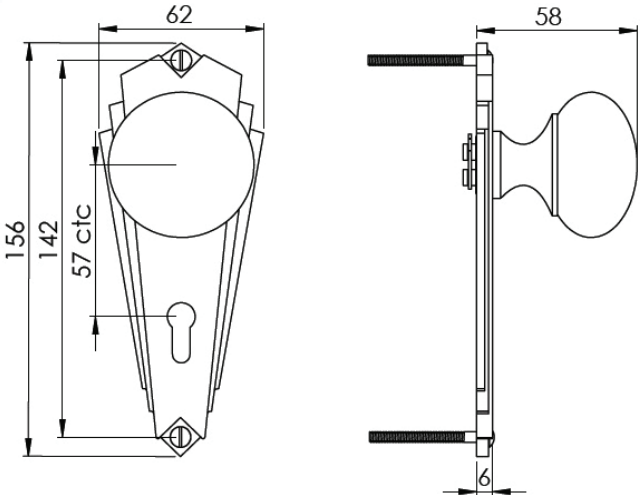


BROADWAY MORTICE KNOB ON LOCK PLATE SPRUNG ON ONE SIDE



1

PAIRED VIEW

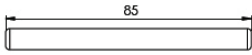


This mortice knob is suitable for use with most U.K. sashlocks with 57mm CTC.
For a new interior door installation we would recommend using our York 3 lever sashlock from the list below.

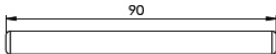
3 LEVER SASHLOCK
(not Included, must be ordered seperately)

YKSL3-AT	3" Antique Finish
YKSL3-BLK	3" Black Finish
YKSL3-MB	3" Matt Bronze Finish
YKSL3-PB	3" Brass Finish
YKSL3-PC&PN	3" Polished Chrome & Nickel Finish
YKSL3-SB	3" Satin Brass Finish
YKSL3-SN&SC	3" Satin Nickel & Chrome Finish

2



Spindle : 7.8mm x 85mm - 1pc.



Spindle : 7.8mm x 90mm - 1pc.

3



2x Male & Female screws.

Box
Contains

1

Pair of
mortice knobs

2

2x spindle suitable for
35mm & 44mm thick door

3

2x male & female
screw sets

M Marcus Ltd., Dudley

Product Code

BR1800

Material

Solid Brass

Available in all Heritage Brass finishes.

Sizes shown are in mm and approximate.
We reserve the right to amend where
necessary and without any prior notice.